

Aeroplane Assembly

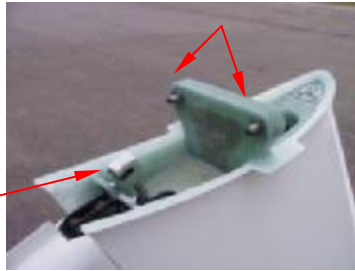
Note

No special qualification needed for assembling/disassembling.

Degrease and clean all connecting parts and grease again using suitable lubricants.

- **Horizontal Tail Unit (HTU) Installation:**

Set the HTU on the two main pins and at the same time insert the elevator control bell into



pins and at the same time automatic gripping.

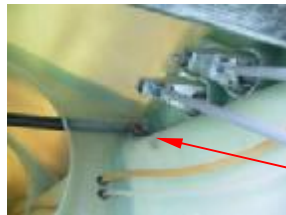


Then screw the front screw and secure with safety pin.



- **Wing Installation:**

Set the left half of the wing on the pins and check automatic connection of control rods.



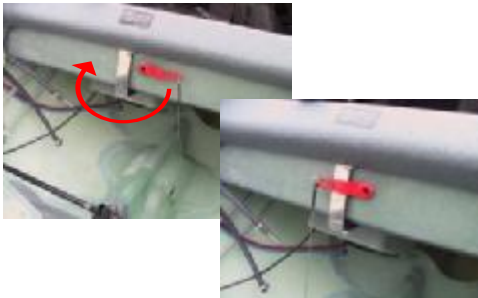
Then secure the rear auxiliary pin.

Follow with the right half of the wing, insert the wing in automatic connection device and secure the rear auxiliary pin.

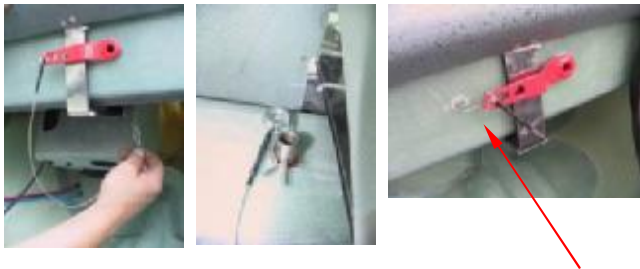
Connect fuel sensor and fuel hose from left and right fuel tank.



Insert the main eccentric pin, turn it 180 ° to tighten both halves of the wing together.



Then secure the main pin with a clip through the spar end and at the rear with a safety pin.



Don't forget to secure the main eccentric pin with wire.

Check control system and fuel gauge function. Use an adhesive tape to cover the gap between the centre section and the wing root.

Aeroplane Disassembly

Follow the Assembly steps in reverse order.